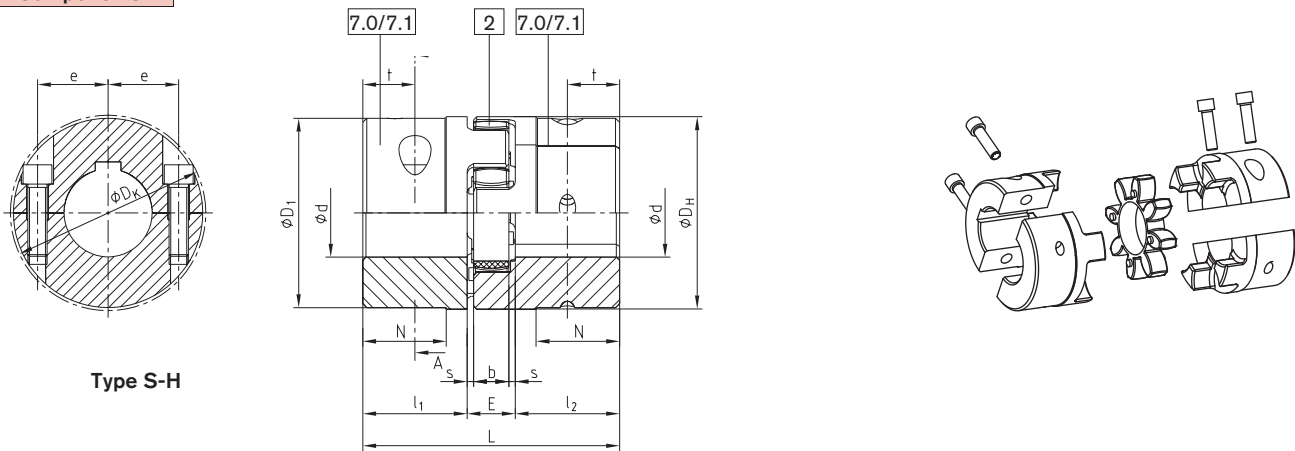


Drop-out center design coupling type S-H with SPLIT-hubs



- Type S-H with split hubs
- Easy assembly/disassembly by means of 4-off screws
- Centering of both halves of the hubs through the fracture surface
- There is no need to displace the power packs for assembly
- Material cast iron
- Torsionally flexible and maintenance-free
- Specifically suitable for tight mounting spaces
- Finish bore according to ISO tolerance H7, feather key according to DIN 6885 sheet 1 - JS9
- Approved according to EC standard 94/9/EC (type 7.0 SPLIT-hub hub without feather key according to category 3)

Components



Type S-H

ROTEX® type S-H																
Size	Finish bore ϕd [mm]		Dimensions [mm]											Cap screws to DIN EN ISO 4762		
	min.	max.	L	$l_1; l_2$	E	b	s	D_H	D_1	D_K	N	e	t	Mxl	Tightening torque T_A [Nm]	
38	24	45	114	45	24	18	3	80	78	83,5	37	3	22,5	M8x30	35	
42	24	55	126	50	26	20	3	95	94	97	40	3	25	M10x30	69	
48	24	55	140	56	28	21	3,5	105	104	108,5	45	3,5	28	M12x35	120	
55	24	65	160	65	30	22	4	120	118	122	52	4	32,5	M12x40	120	
65 ¹⁾	40	70	185	75	35	26	4,5	135	-	132,5	-	4,5	37,5	M12x40	120	
75 ¹⁾	40	80	210	85	40	30	5	160	-	158	-	5	42,5	M16x50	295	
90 ¹⁾	40	90	245	100	45	34	5,5	200	-	197	-	5,5	50	M20x60	580	

7.0= split hub without feather keyway
7.1= split hub with feather keyway

¹⁾ sizes on request

Ordering example:	ROTEX® 38	S-H	98 Sh-A	7.1	Ø 38	7.1	Ø30
	Coupling size	Type	Spider hardness	Hub design	Finish bore	Hub design	Finish bore